



## *Time travel*

With our roots deeply anchored in the ground, we set a firm foot into the future.





The very well secured doors to the past hide many treasures to be discovered by the probing mind...







Look carefully through cracks and open windows, the future lessons lie buried in our past





Though the reminiscence of the past are gradually rusting away, a 'mobylette' can become the vehicle of vivid memories

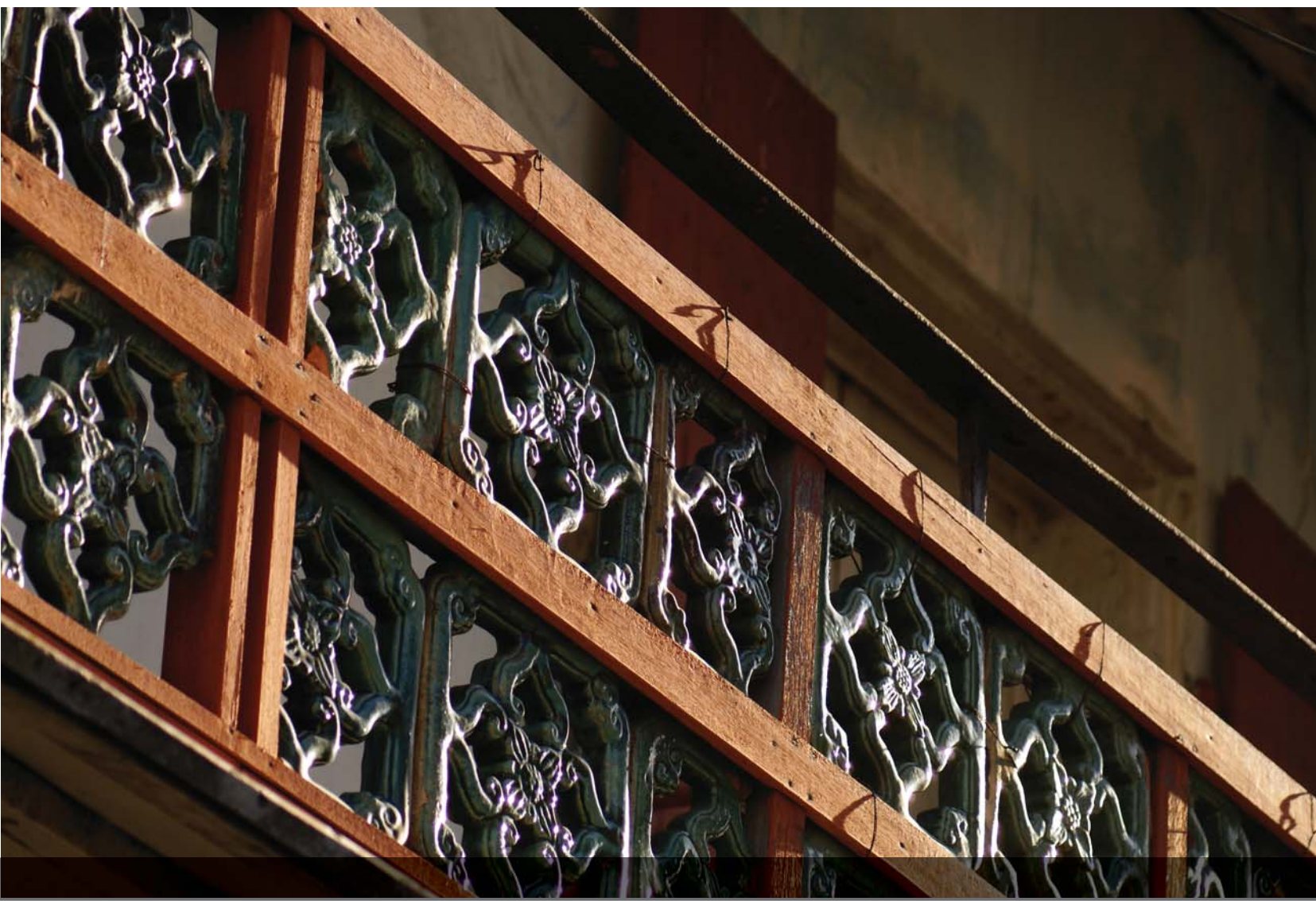




Strong shadows of the past capture our attention by bringing intricate details to light.



Built in a time before the independence, motifs shared by the Jummah Masjid and a Chinese house transcend all boundaries







Trades and businesses were more related to the heart than to money...





Same materials put together differently create a sense of identity...  
In fact we are all same.





So many stories that we would have known only if those walls could talk.







The Victorian style came with Colonial occupations but stayed as Heritage

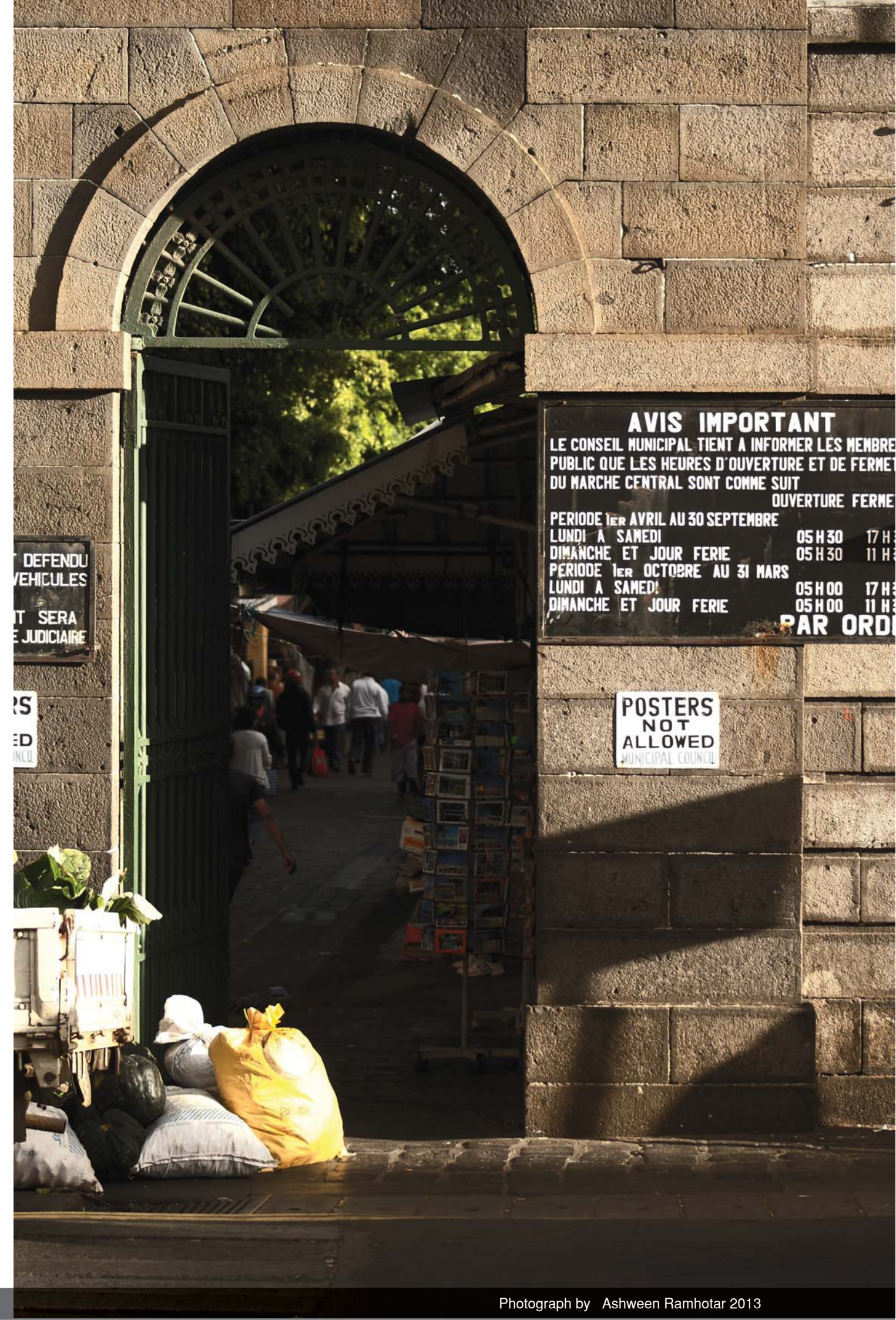




Remember the time before the digital revolution, when buttons and connections had only a physical meaning.







DEFENDU  
VEHICULES  
T SERA  
E JUDICIAIRE

**AVIS IMPORTANT**  
LE CONSEIL MUNICIPAL TIEN A INFORMER LES MEMBRE  
PUBLIC QUE LES HEURES D'OUVERTURE ET DE FERME  
DU MARCHE CENTRAL SONT COMME SUI  
OUVERTURE FERME

PERIODE 1 <sup>ER</sup> AVRIL AU 30 SEPTEMBRE		
LUNDI A SAMEDI	05 H 30	17 H 30
DIMANCHE ET JOUR FERIE	05 H 30	11 H 30
PERIODE 1 <sup>ER</sup> OCTOBRE AU 31 MARS		
LUNDI A SAMEDI	05 H 00	17 H 30
DIMANCHE ET JOUR FERIE	05 H 00	11 H 30

**PAR ORDRE**

POSTERS  
NOT  
ALLOWED  
MUNICIPAL COUNCIL